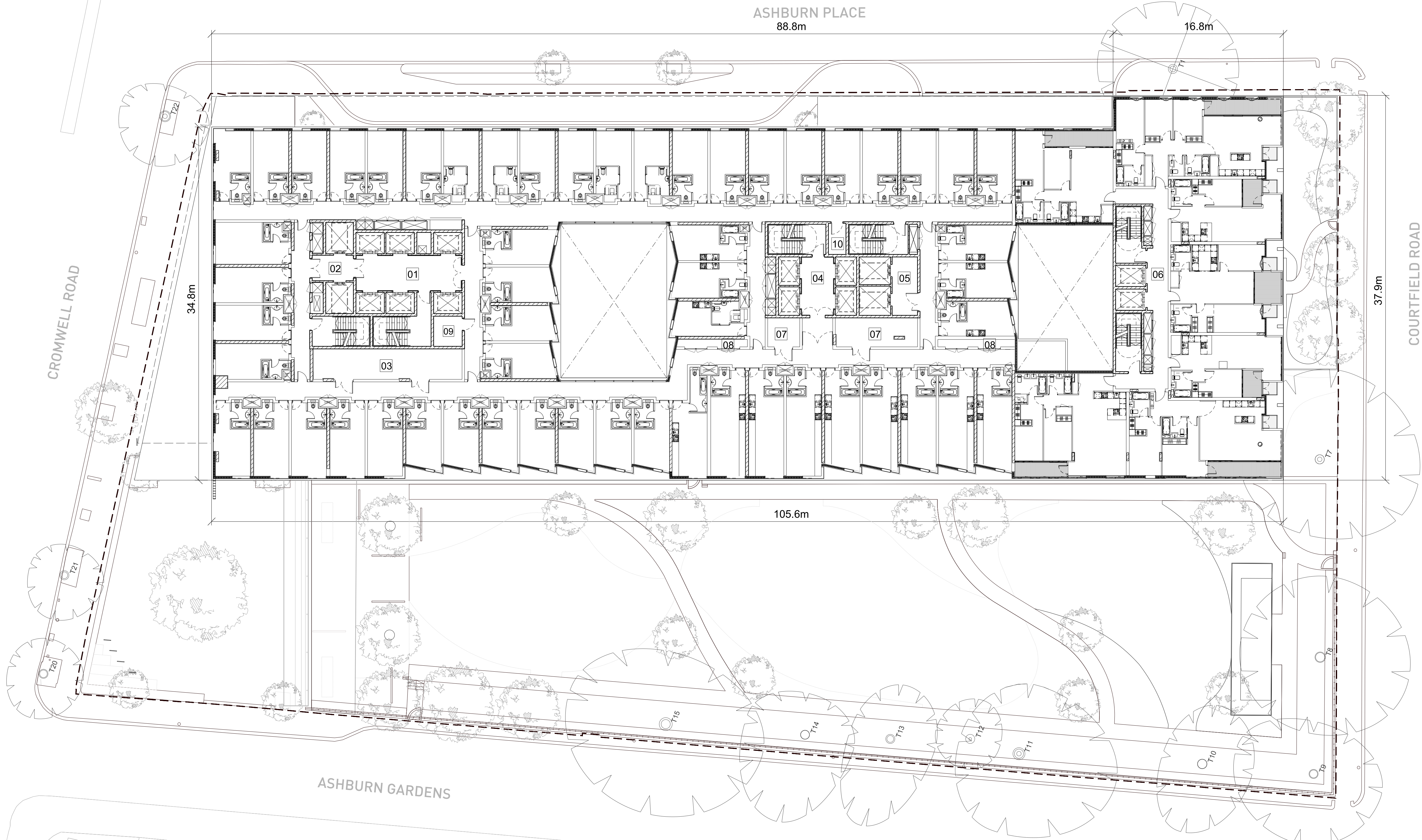


- KEY
- 01 HOTEL MAIN LIFT LOBBY
  - 02 HOTEL SERVICE LIFT LOBBY
  - 03 HOTEL BOH
  - 04 SERVICED APARTMENT MAIN LIFT LOBBY
  - 05 SERVICED APARTMENT SERVICE LIFT LOBBY
  - 06 RESIDENTIAL LIFT LOBBY
  - 07 LINEN STORE
  - 08 CLEANER'S CUPBOARD
  - 09 STORAGE
  - 10 IT CABINET

RENVILLE PLACE

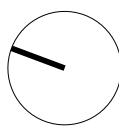


This drawing is copyright.  
Do not scale off dimensions.  
All dimensions to be checked on site by contractor.  
Contractor to report any dimensional discrepancies,  
errors or omissions prior to commencing on site.



NOTE:

NORTH



Rev	Date	Description	Rev	Date	Description
-	15/06/2019	Full Planning Application			
A	11/01/2019	GLA Call-In Amendments			

Project Title  
Kensington Forum Hotel  
Kensington, London

Status  
PLANNING

Drawing Title  
Level 03 Floor Plan

Job No 10106	Scale 1:200(A0) NTS(A3)	Date JAN 2019
Drawing No 10106-A-DRG-ZZ-G200-2003-PL	Revision A	

**simpsonhaugh**

MANCHESTER  
Riverside, 4 Commercial St  
M4 6DT Tel: 0161 835 2340  
www.simpsonhaugh.com

LONDON  
2nd Roberts Place  
LONDON EC1A 8BB  
Tel: 020 7581 9800  
mail@simpsonhaugh.com